



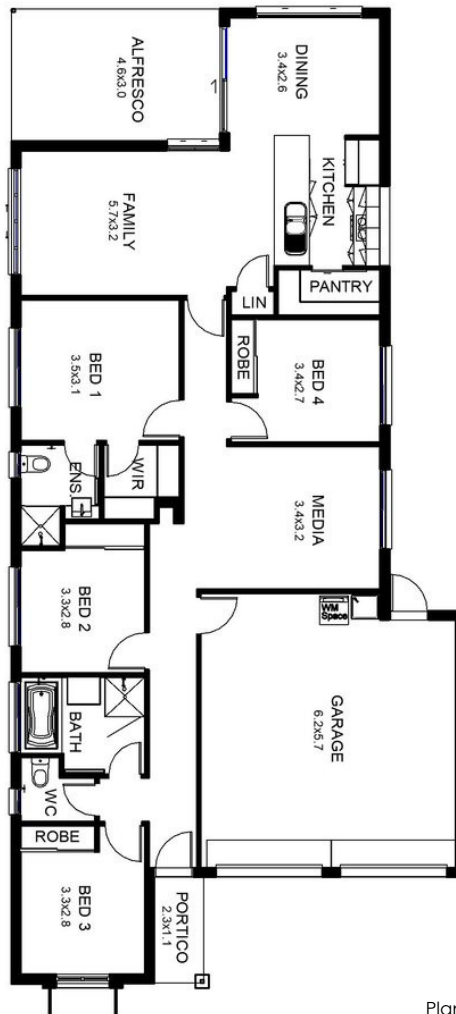


-  Sustainable timber
-  Energy saving lighting
-  Ceiling insulation
-  We support Community events



AREA ANALYSIS	
Living	133.22m ²
Alfresco	14.104m ²
Garage	37.34m ²
Porch	2.70m ²
Grand total	187.36m²

Length 22.00m
Width 10.20m

©All plans are Copyright 2021. Render is indicative only.
Plan inclusions and Pricing are subject to change without notice.