






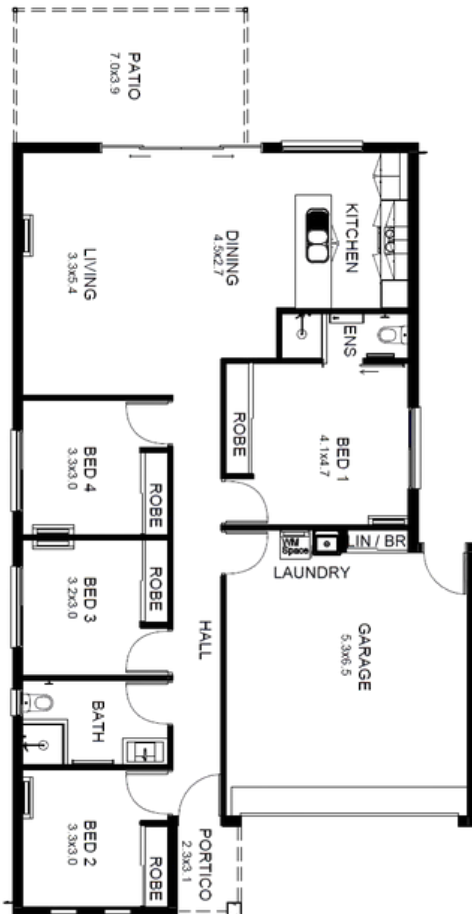




-  4
-  2
-  2



-  Sustainable timber
-  Energy saving lighting
-  Ceiling insulation
-  We support Community events



AREA ANALYSIS	
LIVING	113.13 m ²
GARAGE	35.63 m ²
PATIO	26.90 m ²
PORTICO	6.70 m ²
Grand total	182.36 m²

Length 19.97m
Width 10.20m

©All plans are Copyright 2026. Render is indicative only. Plan inclusions and Pricing are subject to change without notice.