






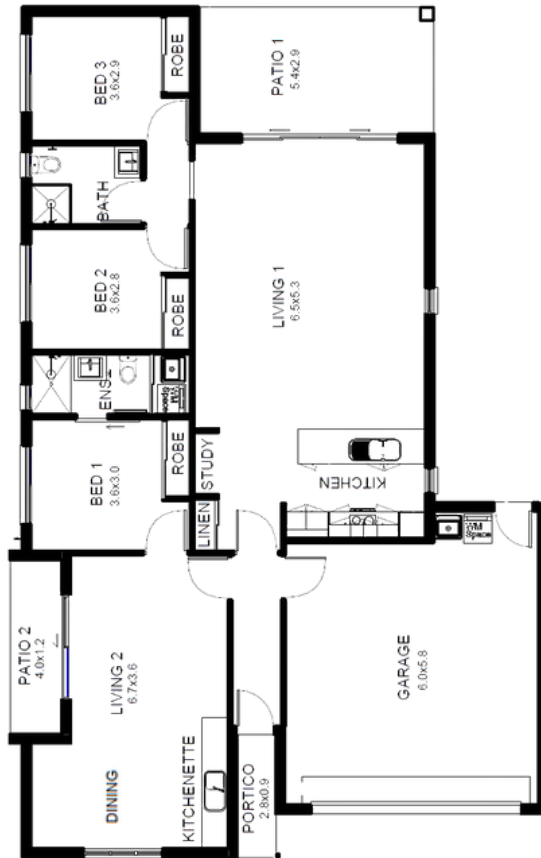




-  3
-  2
-  2



-  Sustainable timber
-  Energy saving lighting
-  Ceiling insulation
-  We support Community events



**AREA ANALYSIS**

LIVING	130.30 m <sup>2</sup>
GARAGE	40.15 m <sup>2</sup>
PATIO	23.94 m <sup>2</sup>
PATIO 2	9.85 m <sup>2</sup>
LOBBY	5.02 m <sup>2</sup>
PORTICO	5.41 m <sup>2</sup>
<b>Grand total</b>	<b>214.66 m<sup>2</sup></b>

Length 18.80m  
Width 11.00m

©All plans are Copyright 2026. Render is indicative only. Plan inclusions and Pricing are subject to change without notice.