



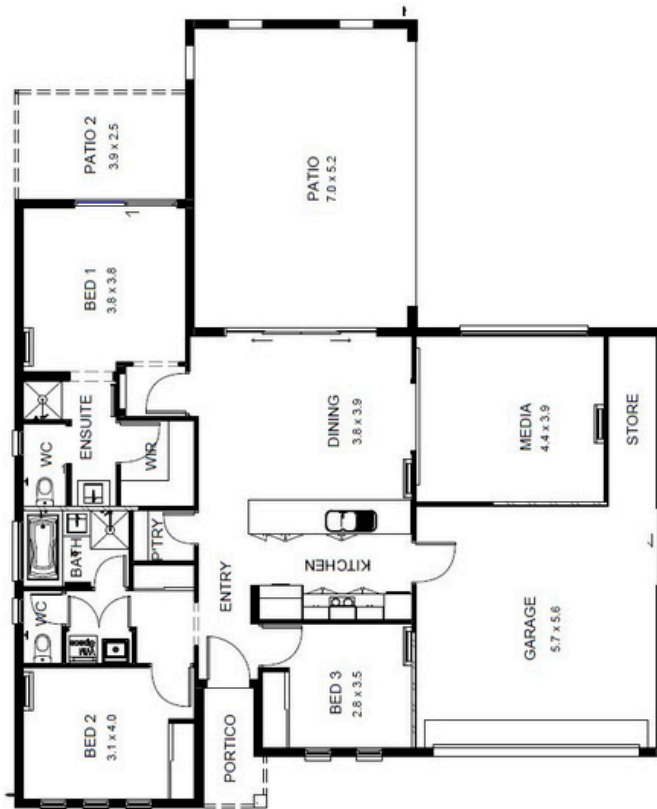




-  3
-  2
-  2
- 



-  Sustainable timber
-  Energy saving lighting
-  Ceiling insulation
-  We support Community events



AREA ANALYSIS	
LIVING	132.82 m ²
GARAGE	35.11 m ²
PATIO	50.46 m ²
PATIO 2	16.97 m ²
PORTICO	6.96 m ²
Grand total	242.32 m²

Length 18.40m
Width 15.20m

©All plans are Copyright 2026. Render is indicative only. Plan inclusions and Pricing are subject to change without notice.