







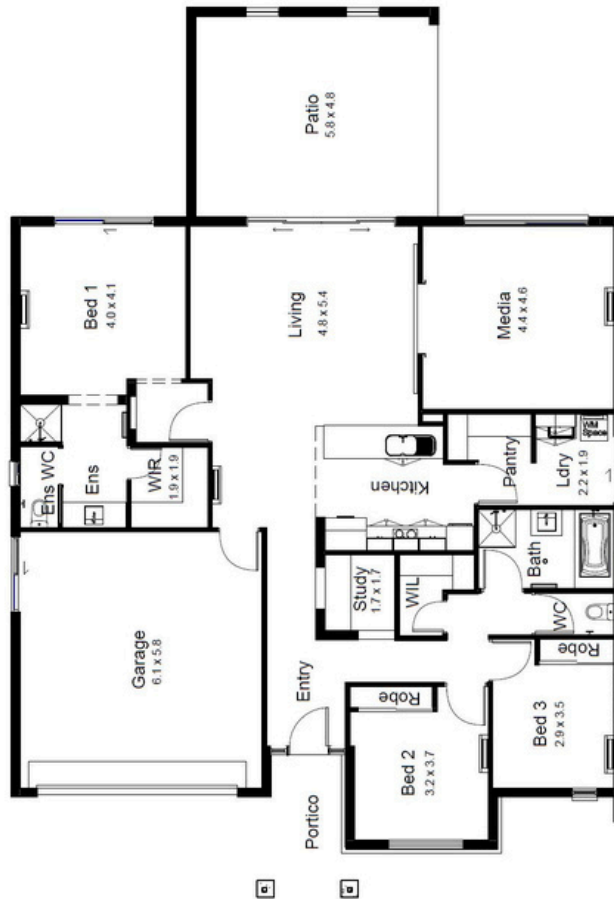




-  3
-  2
-  2
- 



-  Sustainable timber
-  Energy saving lighting
-  Ceiling insulation
-  We support Community events



AREA ANALYSIS	
LIVING	165.80 m ²
GARAGE	38.90 m ²
PATIO	46.02 m ²
PORTICO	12.99 m ²
Grand total	263.71 m²

Length 21.20m
Width 14.60m

©All plans are Copyright 2026. Render is indicative only.
Plan inclusions and Pricing are subject to change without notice.