






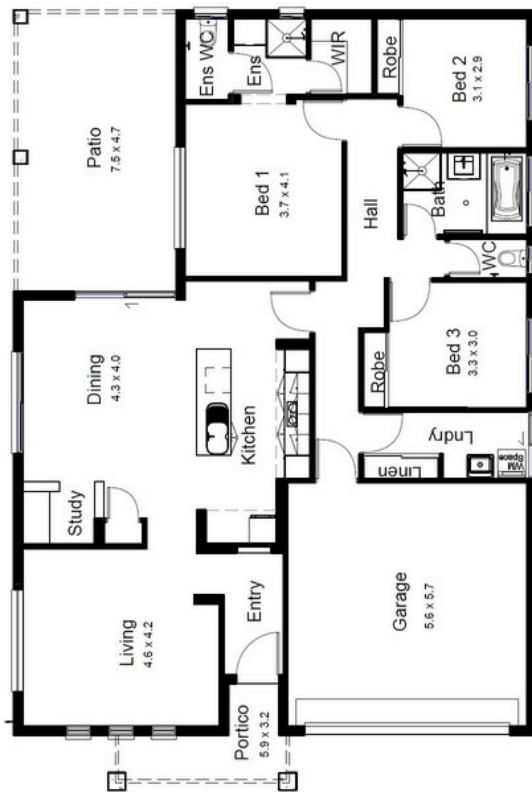




-  3
-  2
-  2



-  Sustainable timber
-  Energy saving lighting
-  Ceiling insulation
-  We support Community events



AREA ANALYSIS

LIVING	146.43 m ²
GARAGE	34.50 m ²
PATIO	35.18 m ²
PORTICO	13.43 m ²
Grand total	229.53 m²

Length 18.30m
Width 12.20m