







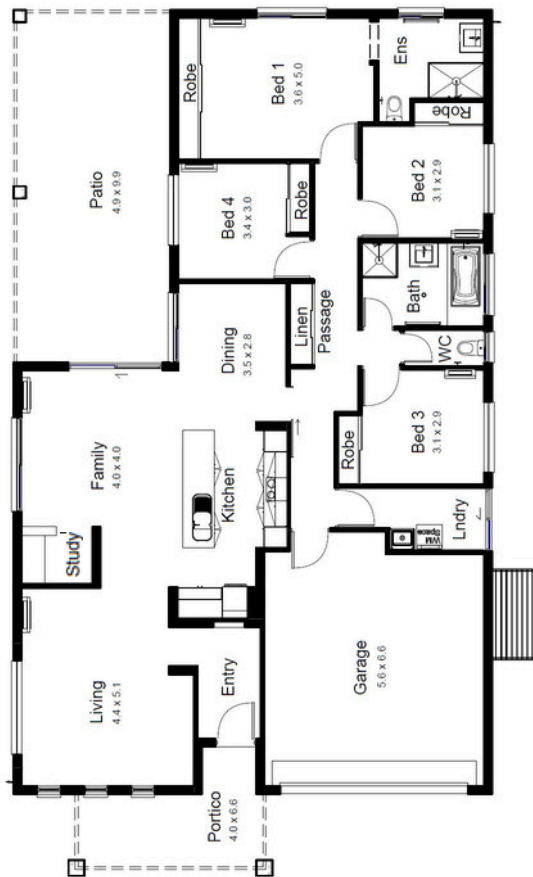




-  4
-  2
-  2
-  2



-  Sustainable timber
-  Energy saving lighting
-  Ceiling insulation
-  We support Community events



AREA ANALYSIS	
LIVING	167.73 m ²
GARAGE	38.59 m ²
PATIO	48.51 m ²
PORTICO	20.13 m ²
Grand total	274.96 m²

Length 22.10m
Width 12.20m

©All plans are Copyright 2026. Render is indicative only. Plan inclusions and Pricing are subject to change without notice.