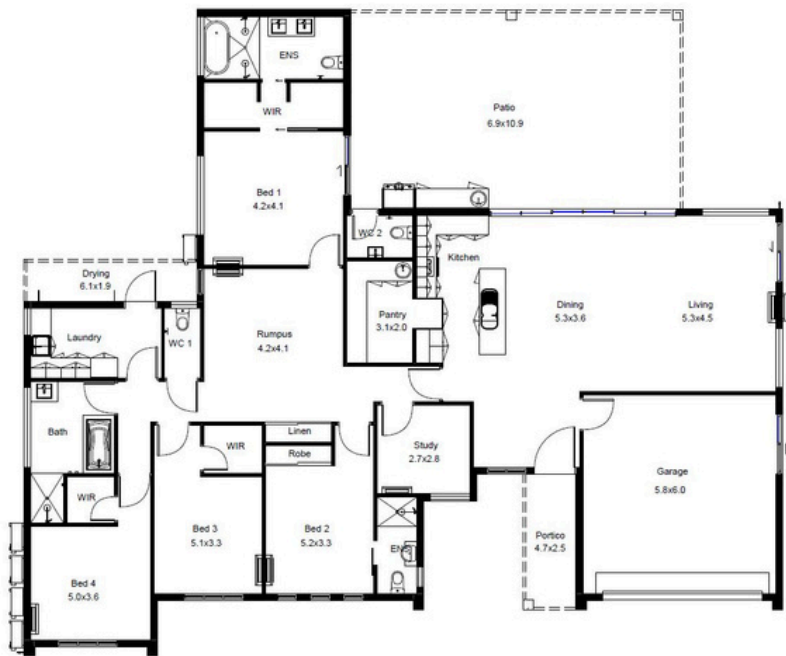




- 4
- 2
- 2
-



AREA ANALYSIS

LIVING	234.23 m ²
GARAGE	37.90 m ²
PATIO	75.03 m ²
DRYING	13.21 m ²
PORTICO	11.80 m ²
Grand total	372.16 m²

Length 19.20m
Width 22.80m

- Sustainable timber
- Energy saving lighting
- Ceiling insulation
- We support Community events

©All plans are Copyright 2026. Render is indicative only. Plan inclusions and Pricing are subject to change without notice.