






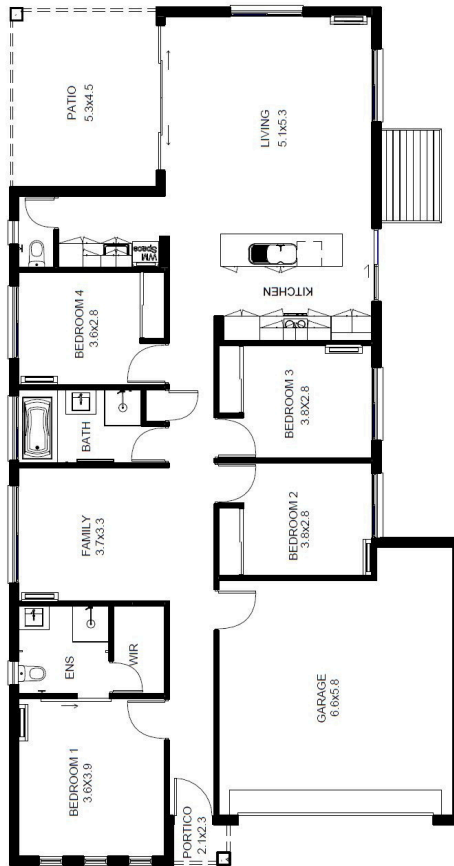




-  4
-  2
-  2



-  Sustainable timber
-  Energy saving lighting
-  Ceiling insulation
-  We support Community events



| AREA ANALYSIS | |
|--------------------|-----------------------------|
| LIVING | 146.15 m ² |
| GARAGE | 37.99 m ² |
| PATIO | 23.84 m ² |
| PARTICO | 4.36 m ² |
| Grand total | 212.34 m² |

Length 21.00m
Width 11.00m

©All plans are Copyright 2026. Render is indicative only. Plan inclusions and Pricing are subject to change without notice.